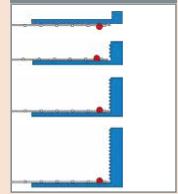




W44



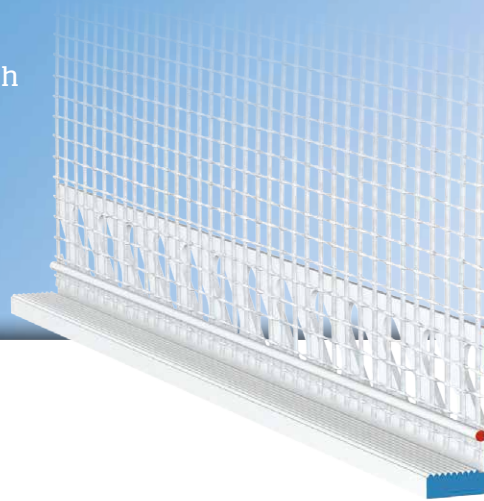
# APU®

PROFILES FOR COMPOUND HEAT INSULATION SYSTEMS

## Stop bead with mesh

# DECO-TEX

With upstand and 12.5 cm mesh

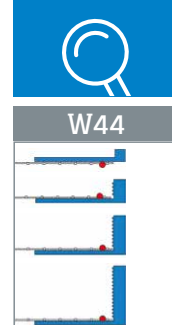


The **APU stop bead with mesh DECO-TEX** is used in compound heat insulation systems as a plaster termination or a separation from final renders.

The profile has a perforated plaster bar, welded to which is a mesh strip.

The raised edging for taking plaster is available in various versions. (3 mm, 6 mm, 10 mm and 15 mm).

What is created after completion of the plastering work is a clean termination of the plaster.



## Design

	ITEM NO.	LENGTH	PACKAGING UNIT	WEIGHT (per PU)
--	----------	--------	----------------	-----------------

### DECO-TEX stop bead with mesh

W44

With upstand and 12.5 cm mesh

3 mm	W44-2003	2.0 m	25 bars = 50 m	3.4 kg
6 mm	W44-2006	2.0 m	25 bars = 50 m	4.6 kg
10 mm	W44-2010	2.0 m	25 bars = 50 m	4.6 kg
15 mm	W44-2015	2.0 m	25 bars = 50 m	5.9 kg

## Features

	DECO-TEX STOP BEAD WITH MESH
Material	<ul style="list-style-type: none"> <li>■ Rigid PVC manufactured under DIN-16941</li> </ul>
Mesh	<ul style="list-style-type: none"> <li>■ Min. 160 g/m<sup>2</sup> approved for compound heat insulation systems</li> <li>■ 12.5 cm wide – MW 4 x 4 mm</li> <li>■ Ultrasonic welded</li> </ul>

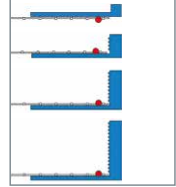
## Important information

Storage	Always store profiles laid down in a dry place.
Other applications	Any applications not clearly described in the documents may be implemented only after consultation with the plaster or ETICS manufacturer.

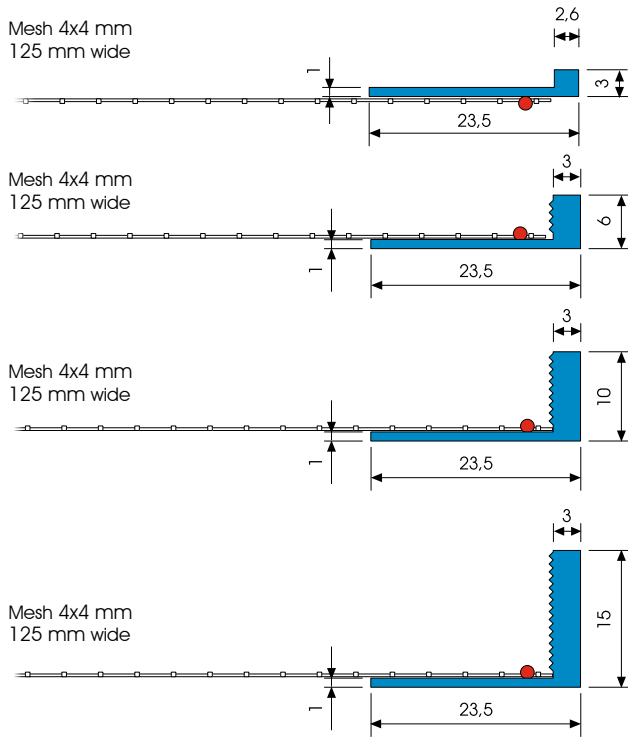
For information on materials, areas of use, tests and correct application, please refer to our 'General Advice and Information'



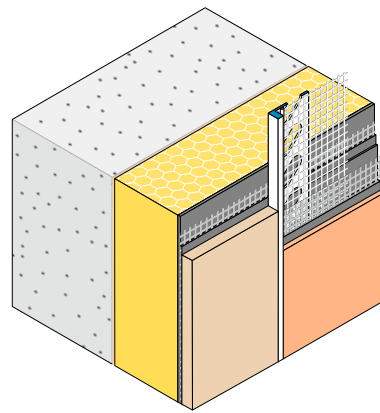
W44



## Details



Sectional drawing in mm



Application drawing