



W61 - 1



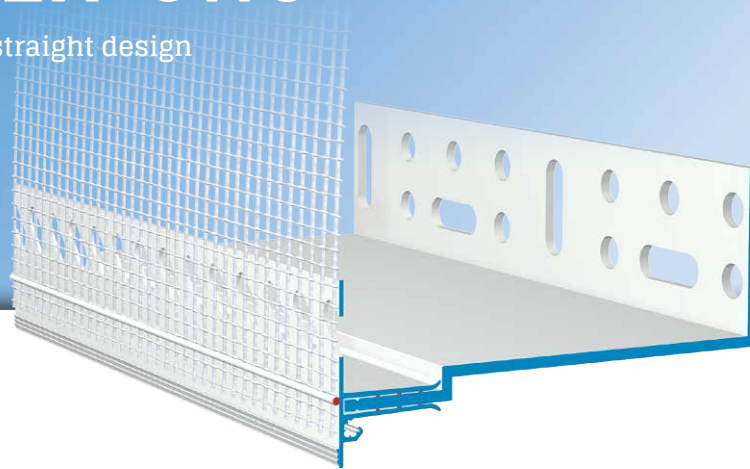
APU®

PROFILES FOR COMPOUND HEAT INSULATION SYSTEMS

Base rail

SOLI-TEX-UNO

Incl. clip-on profile, straight design



The **APU base rail SOLI-TEX-UNO** is used in compound heat insulation systems as the bottom termination of the wall insulation.

The base rail is available in a variety of projection lengths. (Insulation material thickness 50, 60, 80, 100, 120, 140 and 160 mm). Where the insulating material is relatively thick, the extension rail can be used to extend the SOLI-TEX (Z63) base rail by 40 mm to 240 mm. The clip-on profile UNO forms an exact, straight plaster edge.

The base rail SOLI-TEX-UNO consists of the base rail SOLI-TEX (S61) and the clip-on profile UNO (W62 - 1). The clip-on profile is clipped onto the base rail. The profile's straight contour ensures that water is accurately led away. There is a fabric window reveal bead welded onto the profile. Each bar has a fabric overhang on one side of 10cm in the lengthways direction.

The included plug connectors (Z13), butt connectors (Z61) and inner and outer corners (Z18-1) enable the profiles to be joined and fitted very precisely.

What is created after completion of the plastering work is a clean termination of the plaster.



Design

	ITEM NO.	LENGTH	PACKAGING UNIT	WEIGHT (per PU)
--	----------	--------	----------------	-----------------

SOLI-TEX-UNO base rail

W61-1

Incl. W62-1 clip-on profile, with straight drip edge

50 mm	W61-1-2005	2.0 m	10 bars = 20 m	11.8 kg
60 mm	W61-1-2006	2.0 m	10 bars = 20 m	13.3 kg
80 mm	W61-1-2008	2.0 m	10 bars = 20 m	14.4 kg
100 mm	W61-1-2010	2.0 m	10 bars = 20 m	16.0 kg
120 mm	W61-1-2012	2.0 m	10 bars = 20 m	16.7 kg
140 mm	W61-1-2014	2.0 m	10 bars = 20 m	17.5 kg
160 mm	W61-1-2016	2.0 m	10 bars = 20 m	20.0 kg

Features

	SOLI-TEX-UNO BASE RAIL
Material	<ul style="list-style-type: none"> ■ Rigid PVC manufactured under DIN 16941
Features	<ul style="list-style-type: none"> ■ S61-20.. SOLI-TEX base rail 2.0m ■ W62-1-2100 SOLI-TEX-UNO clip-on profile 2.1 m
Mesh	<ul style="list-style-type: none"> ■ Min. 160 g/m² approved for compound heat insulation systems ■ 12.5 cm wide – MW 4x4 mm ■ Ultrasonic welded
Accessories	<ul style="list-style-type: none"> ■ Z61-0000 Butt connectors (1-2 bars depending on projection) ■ Z13-0000 Plug connectors (1 bag) ■ Z18-1-1010i Internal corners (1 piece) ■ Z18-1-1010a External corners (2 pieces)
Optional accessories	<ul style="list-style-type: none"> ■ Z63-2004 SOLI-TEX Extension rail, 40 mm
Inspections	<ul style="list-style-type: none"> ■ Munich Research Institute for Heat Insulation Heat Transmission Coefficient Test Report

Important information

Storage	Always store profiles laid down in a dry place.
Other applications	Any applications not clearly described in the documents may be implemented only after consultation with the plaster or ETICS manufacturer.

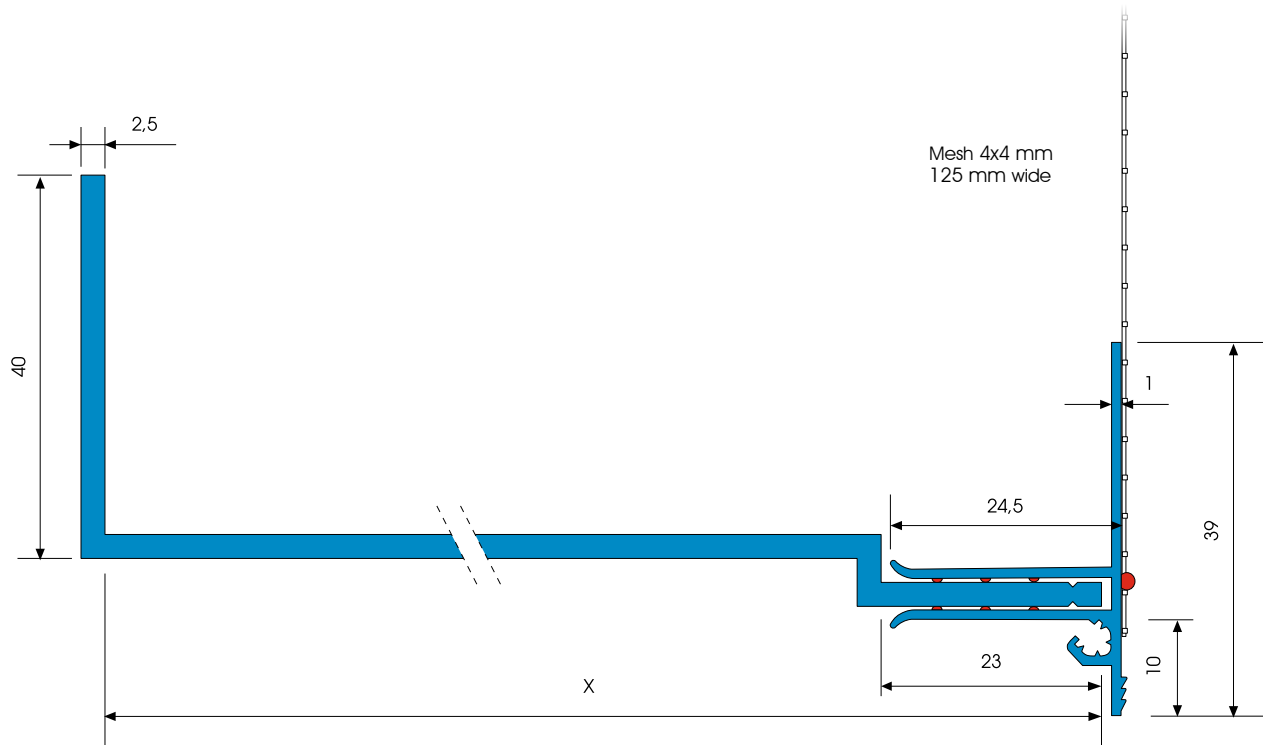
For information on materials, areas of use, tests and correct application, please refer to our 'General Advice and Information'



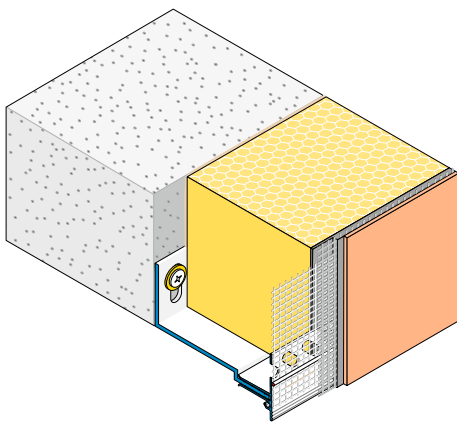
W61 - 1



Details



Sectional drawing in mm



Application drawing